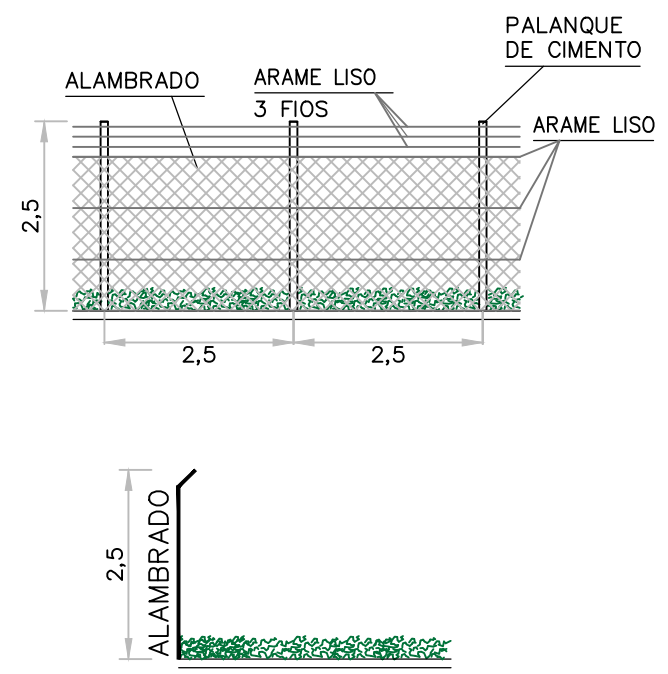





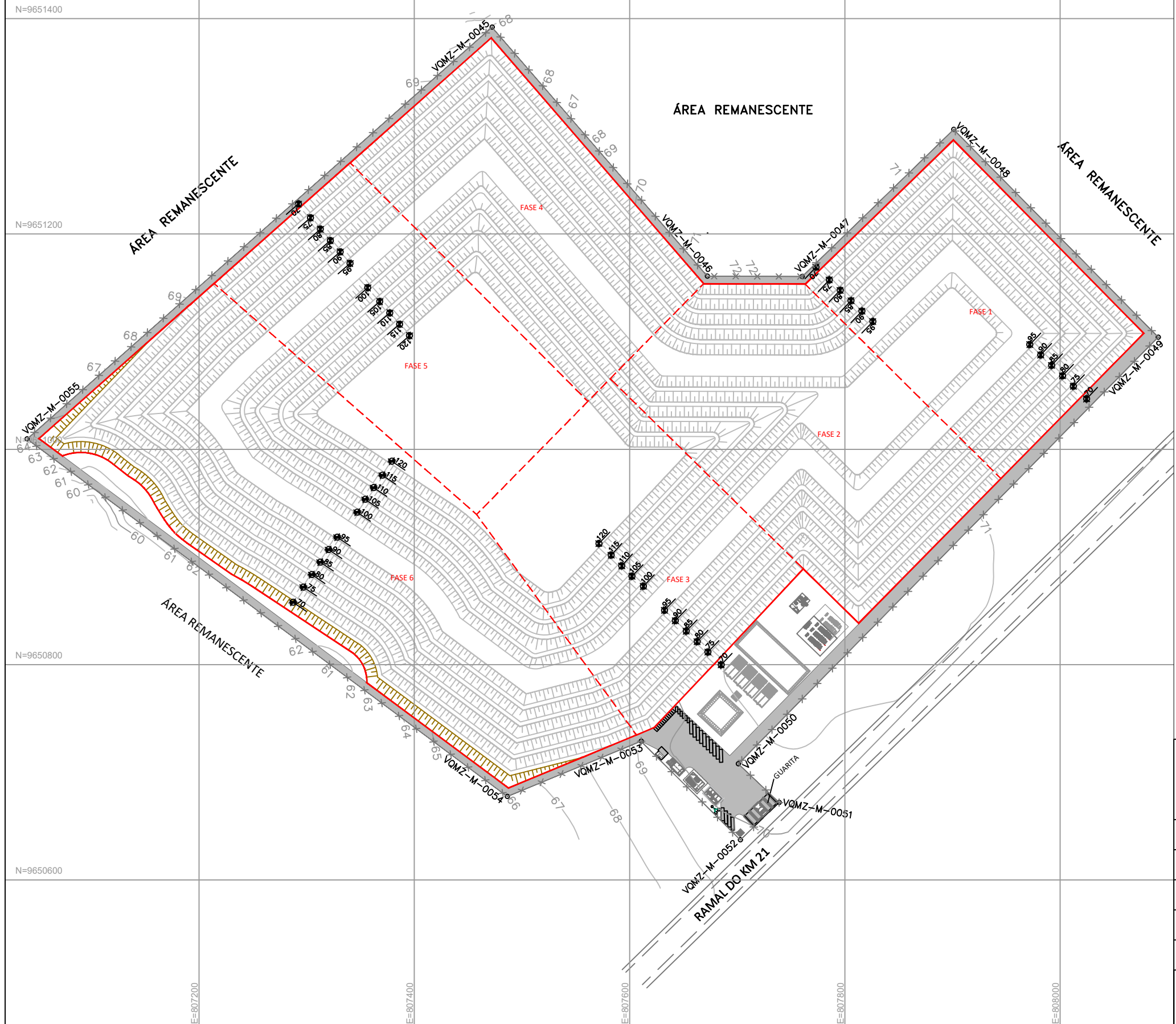


DETALHE DA CERCA
ESCALA 1:10



LEGENDA:

-  LIMITE DA ÁREA DIRETAMENTE AFETADA - ADA
-  ÁREA DE INTERVENÇÃO DO ATERRO
-  ACESSO INTERNO PLANEJADO
-  TALUDE DE RESÍDUOS PROJETADO
-  CERCAMENTO PROJETADO



 RESITEC SERVIÇOS INDUSTRIAIS LTDA.			
CLIENTE: NORTE AMBIENTAL TRATAMENTO DE RESÍDUOS LTDA.			
TÍTULO: SISTEMA DE TRATAMENTO E DESTINAÇÃO DE RESÍDUOS - STDR IRANDUBA			
LOCAL: RODOVIA MANOEL URBANO, AM 070, KM 21 - GLEBA ARIAÚ - IRANDUBA-AM			
ASSUNTO: LAYOUT DO CERCAMENTO DO EMPREENDIMENTO			REV.: 0
FONTE: LEVANTAMENTO TOPOGRÁFICO EXECUTADO POR ENGETOP			ESCALA: 1:4.000
RESPONSÁVEL TÉCNICO  CAMILA BUENO TOBIEZI CREA: 5069186616-SP ART: 28027230181123684	 PEDRO LUIZ VILELA CREA: 0600864920-SP ART: 28027230181167511		